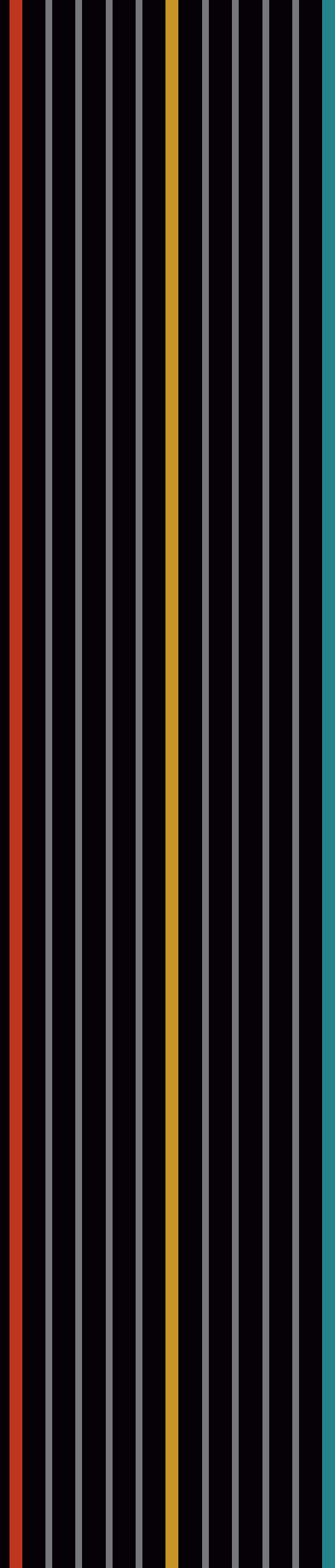


Surfaces with an edge





A

B

C

D

1



WD 21

SIBARI



WD 57

SALINA



WD 37

ANDO



WD 41

MASERI

2



WD 27

PRUNUS



WD 24

ARANCIO



WD 34

COMINO



WD 52

LACONI

3



WD 63

CORDA



WD 47

SABBIA



WD 45

ROVERE



WD 61

FANGO

SOLIDS

E

F

G

H

1



LS 82

BIANCO

LS 83

PIOMBO

LS 65

PANAREA

LS 79

GRIGIO

2



LS 81

NAPOLI

LS 73

DUNA

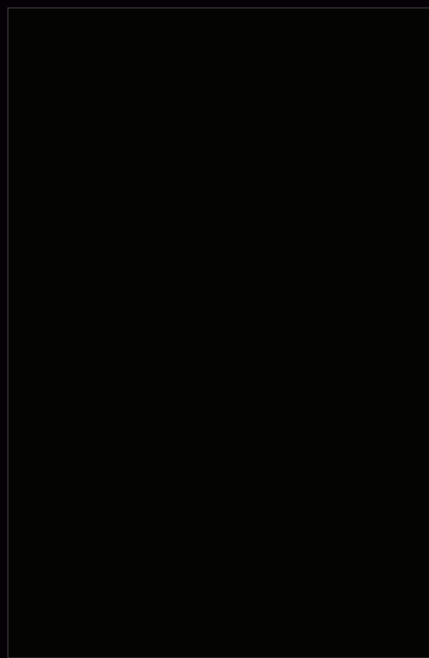
LS 84

MAGNOLIA

LS 86

ECLISSI

3



LS 67

NERO

LS 74

COSSATO

LS 78

RENIO

LS 69

CANAPA

TEXTILES



I

J

K

L

1



TX 23

SIZA



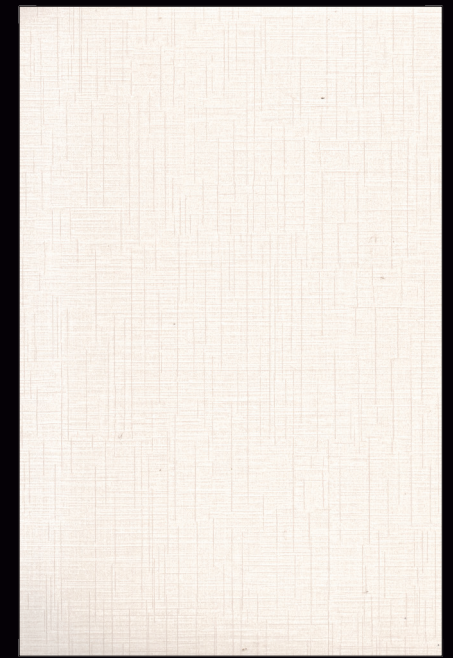
TX 12

DELAVE'



TX 15

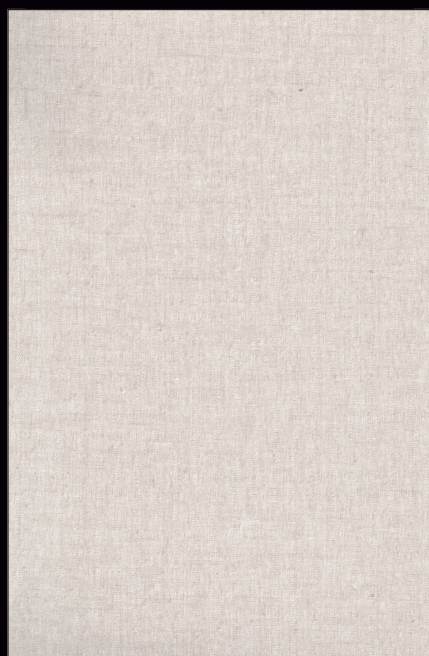
EOLO



TX 65

ADULA

2



TX 39

PERLA



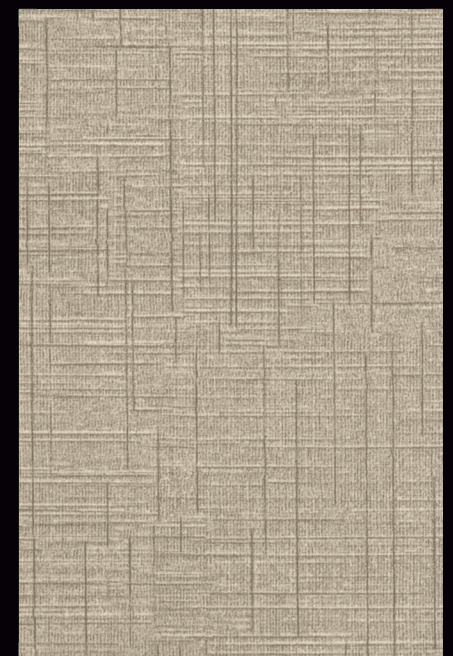
TX 42

AZIMUT



TX 48

TITANIO



TX 59

CUNEO

3



TX 19

CURIO



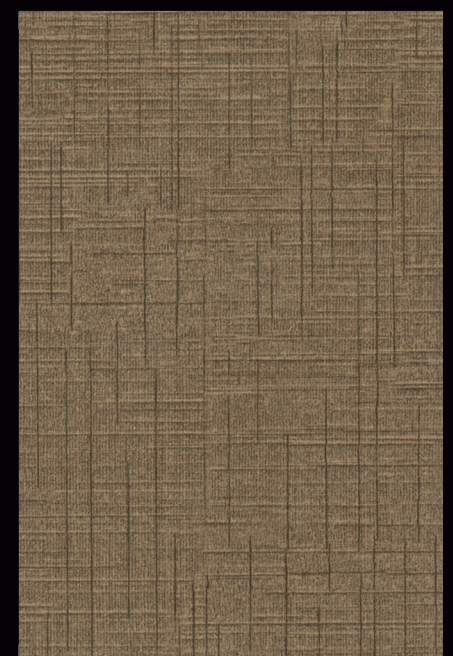
TX 29

ASCOT



TX 32

BALTICO



TX 53

TORANO

INDEX

D. No.	Design Name	Column	Row	Rehau	E3
WD 21	Sibari	A	1	695P	
WD 27	Prunus	A	2	067P	
WD 63	Corda	A	3	675P	
WD 57	Salina	B	1	058P	
WD 24	Arancio	B	2	420P	
WD 47	Sabbia	B	3	236P	
WD 37	Ando	C	1	059P	
WD 34	Comino	C	2	172P	
WD 45	Rovere	C	3	248P	
WD 41	Maseri	D	1	615P	
WD 52	Laconi	D	2	224P	
WD 61	Fango	D	3	770P	
LS 82	Bianco	E	1	110124	1103
LS 81	Napoli	E	2	110165	
LS 67	Nero	E	3	75617	
LS 83	Piombo	F	1	112052	
LS 73	Duna	F	2	75635	
LS 74	Cossato	F	3	75728	

D. No.	Design Name	Column	Row	Rehau	E3
LS 65	Panarea	G	1	110112	
LS 84	Magnolia	G	2	110109	
LS 78	Renio	G	3	110162	
LS 79	Grigio	H	1		1052
LS 86	Eclissi	H	2	75704	
LS 69	Canapa	H	3	75709	
TX 23	Siza	I	1	403 P	
TX 39	Perla	I	2		Fab-25-2089
TX 19	Curio	I	3	569 P	
TX 12	Delave'	J	1		Fab-24-2088
TX 42	Azimut	J	2		Fab-26-2096
TX 29	Ascot	J	3		Fab-14-2075
TX 15	Eolo	K	1	400P	
TX 48	Titanio	K	2	701P	
TX 32	Baltico	K	3	700P	
TX 65	Adula	L	1	555P	
TX 59	Cuneo	L	2	433P	
TX 53	Torano	L	3	434 P	

TECHNICAL SPECIFICATION

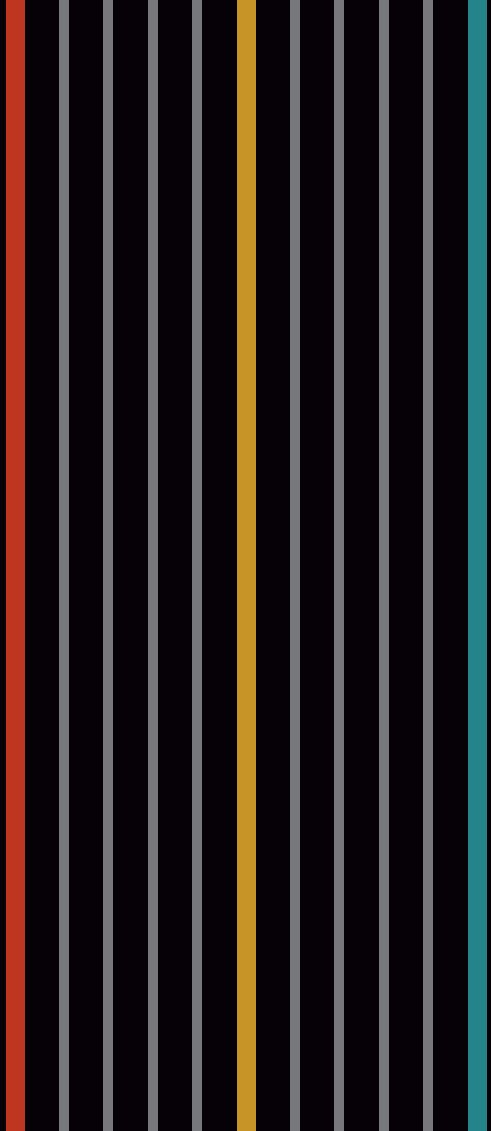
Sr. No.	Performance Category	Grade	Requirement of IS2046	Actual Test Result
1	Resistance to colour change	HGS	Min. 5 Wool STD.	Less than 5
2	Resistance to staining	HGS	Not worse than 5	5 (No visible change)
	a) Citric Acid Solution			
	b) Ink			
	c) Rectified Spirit			
	d) Iodine Solution			
	e) Kerosine Oil			
	f) Silver Nitrate Solution			
3	Resistance to immersion in boiling water	CGF		
	a) Boiling water absorption(%)			
	b) Increase in thickness(%)			
	c) Effect on the surface			
4	Flexural Strength	HGS	No requirement	1666 6 kg/cm2
5	Tensile Strength	HGS	No requirement	533.3 kg/cm2
6	Resistance to dry heat at 180C	CGS	Degree 3 to 4	Degree 5 (No visible change)
7	Warping (Flatness)	CGS	Max. 10 for double faced	6.5
8	Thickness variation	CGS	Max% 0.20 for 3.0mm thickness	0.06
9	Dimensional stability at deviated temperature visual examination	CGS		Satisfactory
10	Machining test	CGS		Satisfactory
11	Resistance to spread of flame	CGS	Class B	Class A
12	Dimensional Stability at 20C	CGS		
	a) Machine Direction (%)			
	b) Transverse Direction (o/o)			
13	Determination of Visibility due to smoke	CGS	Class B	Class A

STANDARDS: International Standards: ISO 4586 -1 & 21 Indian Standards: IS 2046:1995,C/K 5141 European Union Standards: MTDS 086,EN 438-2:20051 British Standards: BS 3794 · 1 & 2

LIMITED LIABILITY WARRANTY: "Guaranteed thickness with high quality back sanding. Company warrants that all its products are free from manufacturing defects and perfectly fit for use under normal conditions. In case of any claims," the liability of the Company is however limited to the cost of the products only.

MAINTENANCE: Clean with mild soap solution with soft cloth. Abrasive cleaners should not be used. Excessive direct sunlight, heat & moisture should be avoided. Products can be used for both vertical & horizontal surfaces.

RESISTANCE: Resistance to surface water, boiling water, cigarette burns. staining and mild scratches.



BRAND OWNED & MARKETED BY:

LAMITUDE

info@lamitude.com, www.lamitude.com

MANUFACTURING PARTNER :



Wonder Industries Private Limited
www.wonderlam.com